







Stavanger domkirke

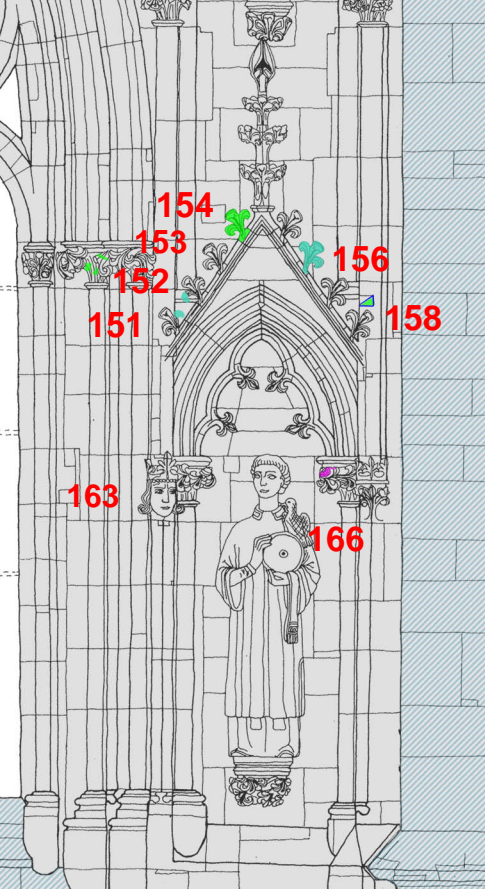
Østveggen Nedre nisje nord

**Klikk på rødt
rektangel for
detaljbeskrivelse
av inngrep**

**Bruk
navigasjonspanel
for å se kart over
stein og skader**

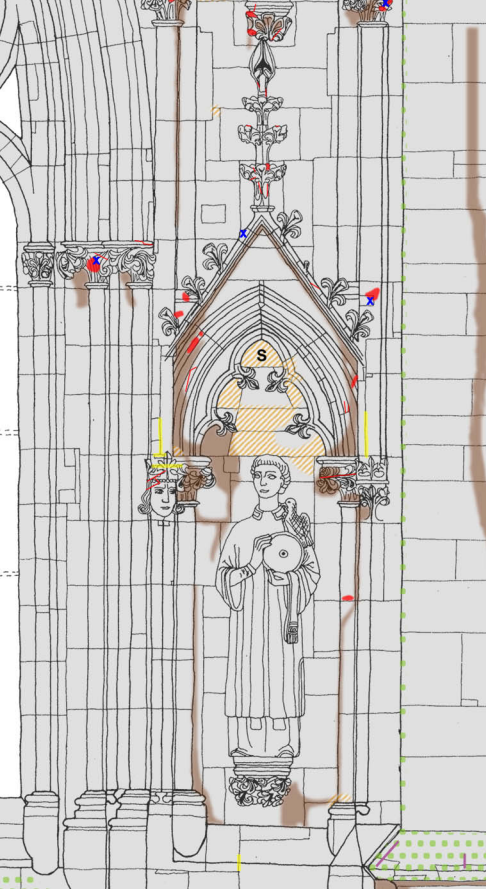
Restaureringsinngrep

-  Blybeslag
-  Fuging/komplettering kalkmørt.
-  Liming/komplett. Billys steinlim
-  Tilbakeføring eksist. stein
-  Nyhugging steindetalj
-  Rensing/vasking



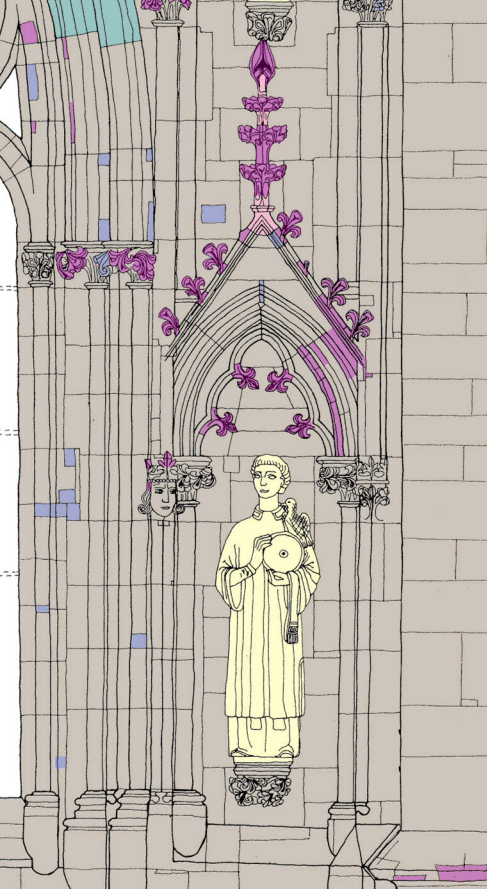
Stavanger domkirke

Østveggen Nedre nisje nord



Skader

-  Steinbortfall og steinsprekk
-  Fugesprekk
-  Steinformitring - sterk
-  Steinformitring - svak
-  Sorte skorper
-  Saltutblomstring
-  Alger, lav og noe mose
-  Jerndybler
-  Kobberkramper



Stavanger domkirke

Østveggen Nedre nisje nord

Steintyper

-  Spraglete kleber (1870)
-  Bjørnåkleber (1920)
-  Metasandstein (?) (1962)
-  Grønnskifer (Middelalder - MA)
-  Stavangerkleber (MA)
-  Diverse kleber (1870)
-  Kviknekleber (1986)
-  Bruddsteinsmurverk (MA)
-  Hard blålig/grålig kleber