







## Stavanger domkirke

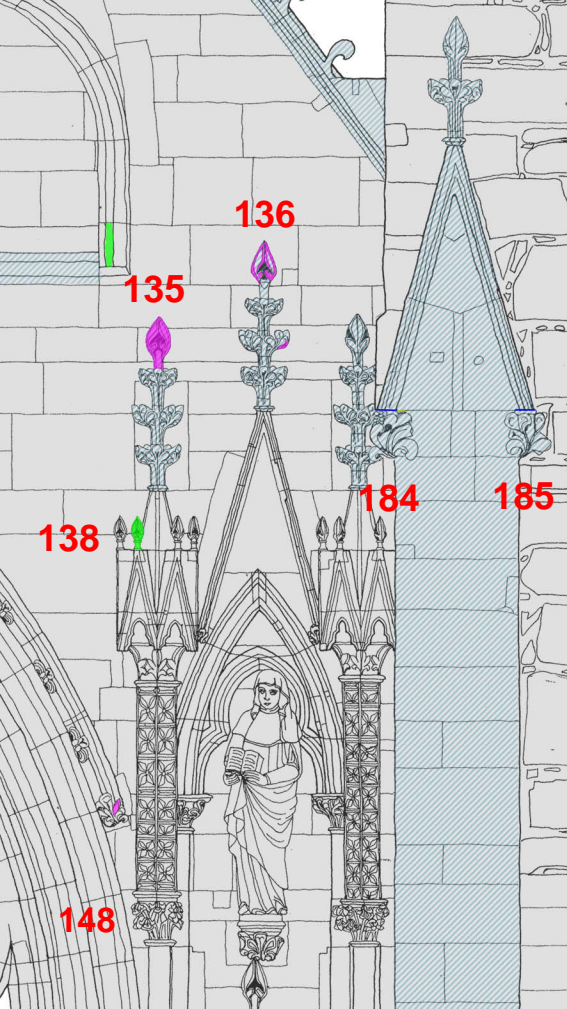
### Østveggen Øvre nisje nord

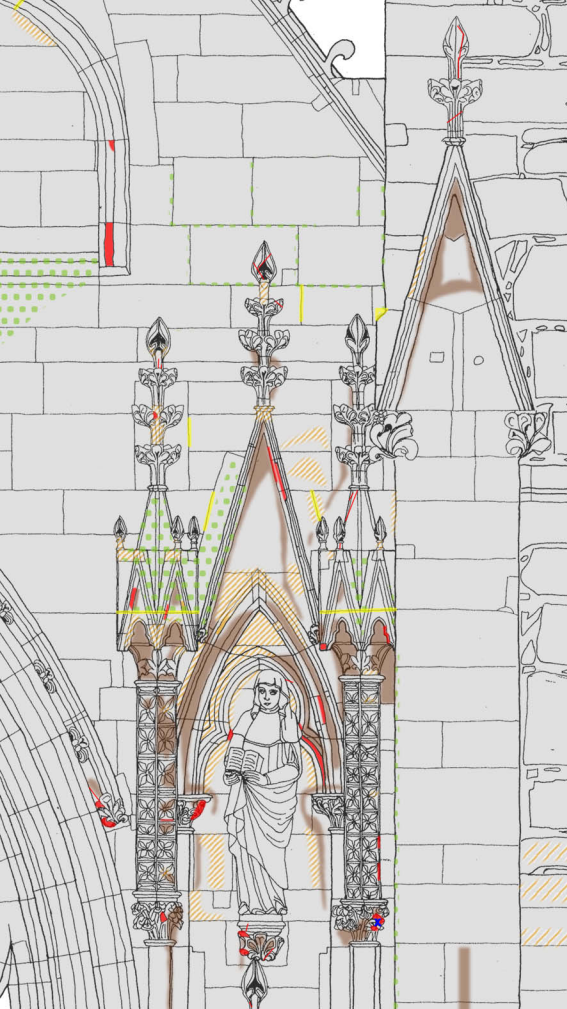
**Klikk på rødt  
rektangel for  
detaljbeskrivelse  
av inngrep**

**Bruk  
navigasjonspanel  
for å se kart over  
stein og skader**

#### Restaureringsinngrep

-  Blybeslag
-  Fuging/komplettering kalkmørt.
-  Liming/komplett. Billys steinlim
-  Tilbakeføring eksist. stein
-  Nyhugging steindetalj
-  Rensing/vasking



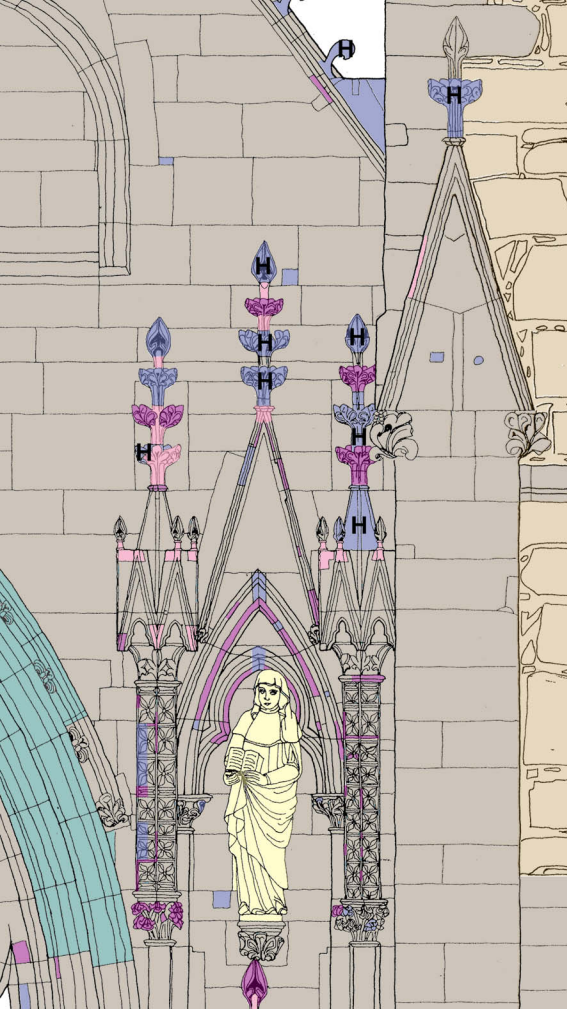


## Stavanger domkirke

### Østveggen Øvre nisje nord

#### Skader

- Steinbortfall og steinsprekk
- Fugesprekk
- Steinforvitring - sterk
- Steinforvitring - svak
- Sorte skorper
- Saltutbløstring
- Alger, lav og noe mose
- Jerndybler
- Kobberkramper



## Stavanger domkirke

### Østveggen Øvre nisje nord

#### Steintyper

- Spraglete kleber (1870)
- Bjørnåkleber (1920)
- Metasandstein (?) (1962)
- Grønnskifer (Middelalder - MA)
- Stavangerkleber (MA)
- Diverse kleber (1870)
- Kviknekleber (1986)
- Bruddsteinsmurverk (MA)
- H Hard blålig/grålig kleber