



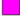



Stavanger domkirke

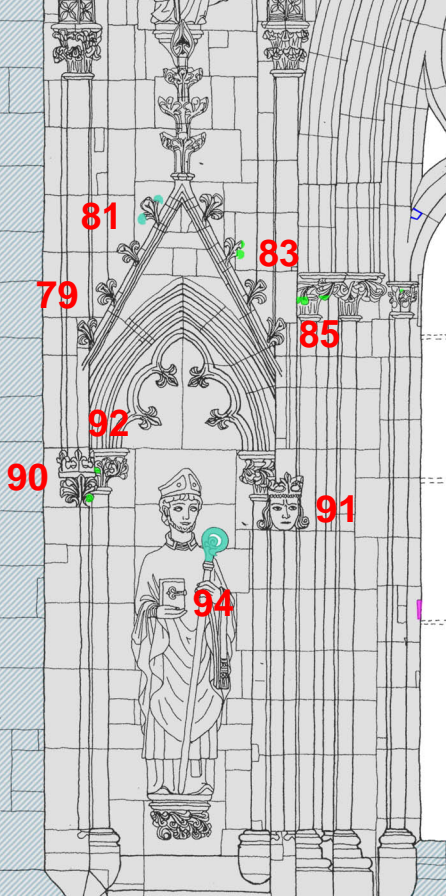
Østveggen Nedre nisje sør

**Klikk på rødt
rektangel for
detaljbeskrivelse
av inngrep**

**Bruk
navigasjonspanel
for å se kart over
stein og skader**

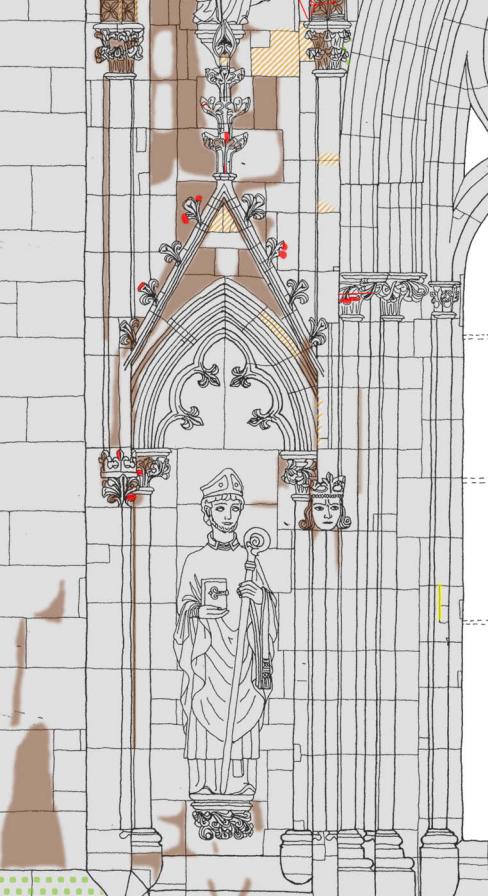
Restaureringsinngrep

-  Blybeslag
-  Fuging/komplettering kalkmørt.
-  Liming/komplett. Billys steinlim
-  Tilbakeføring eksist. stein
-  Nyhugging steindetalj
-  Rensing/vasking



Stavanger domkirke

Østveggen Nedre nisje sør



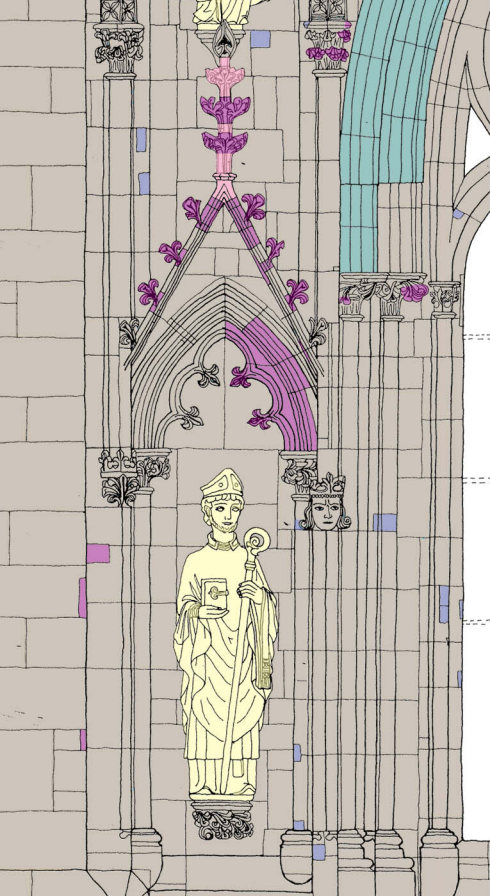
Skader

- Steinbortfall og steinsprekk
- Fugesprekk
- Steinfrovitring - sterk
- Steinfrovitring - svak
- Sorte skorper
- Saltutblomstring
- Alger, lav og noe mose
- Jerndybler
- Kobberkramper



Stavanger domkirke

Østveggen
Nedre nisje sør



Steintyper

-  Spraglete kleber (1870)
-  Bjørnåkleber (1920)
-  Metasandstein (?) (1962)
-  Grønnskifer (Middelalder - MA)
-  Stavangerkleber (MA)
-  Diverse kleber (1870)
-  Kviknekleber (1986)
-  Bruddsteinsmurverk (MA)
-  Hard blålig/grålig kleber