







## Stavanger domkirke

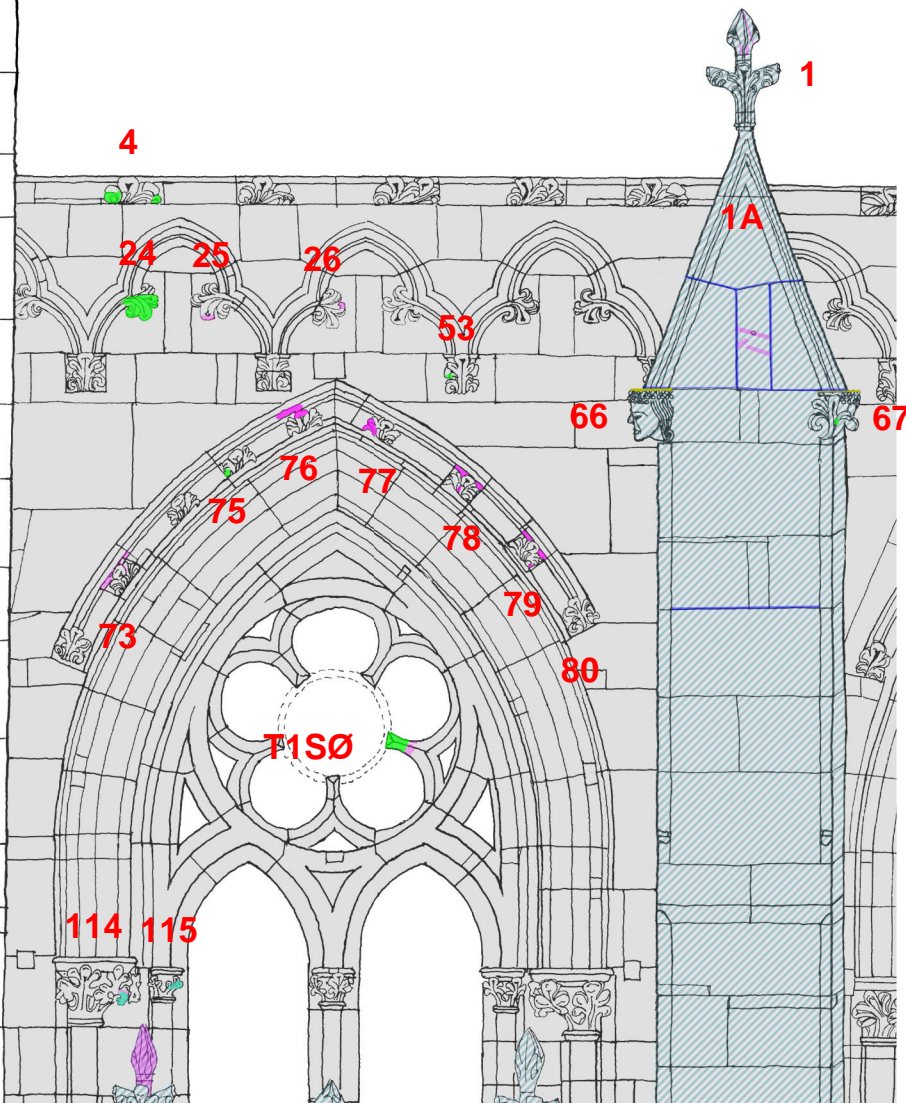
### Sørveggen Vestre felt oppe

Klikk på rødt  
rektangel for  
detaljbeskrivelse  
av inngrep

Bruk  
navigasjonspanel  
for å se kart over  
stein og skader

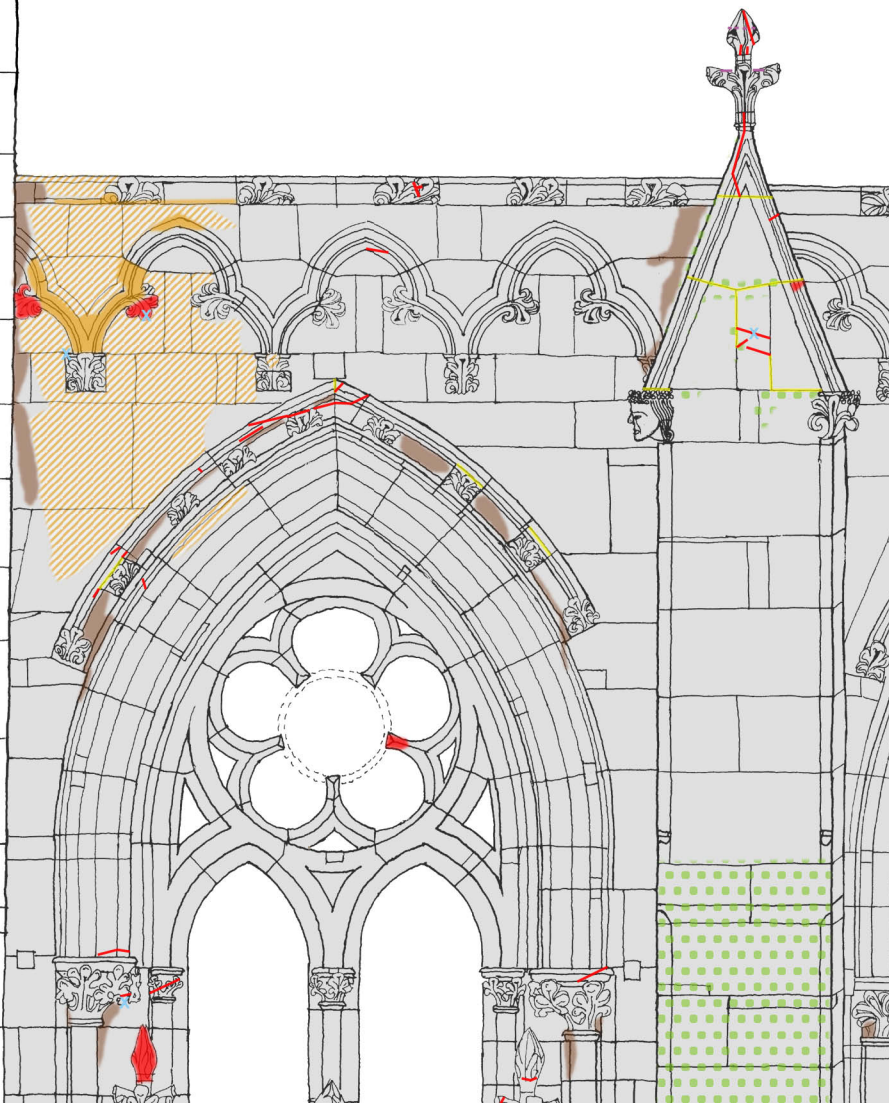
#### Restaureringsinngrep

-  Blybeslag
-  Fuging/komplettering kalkmørt.
-  Liming/komplett. Billys steinlim
-  Tilbakeføring eksist. stein
-  Nyhugging steindetalj
-  Rensing/vasking



## Stavanger domkirke

### Sørveggen Vestre felt oppe

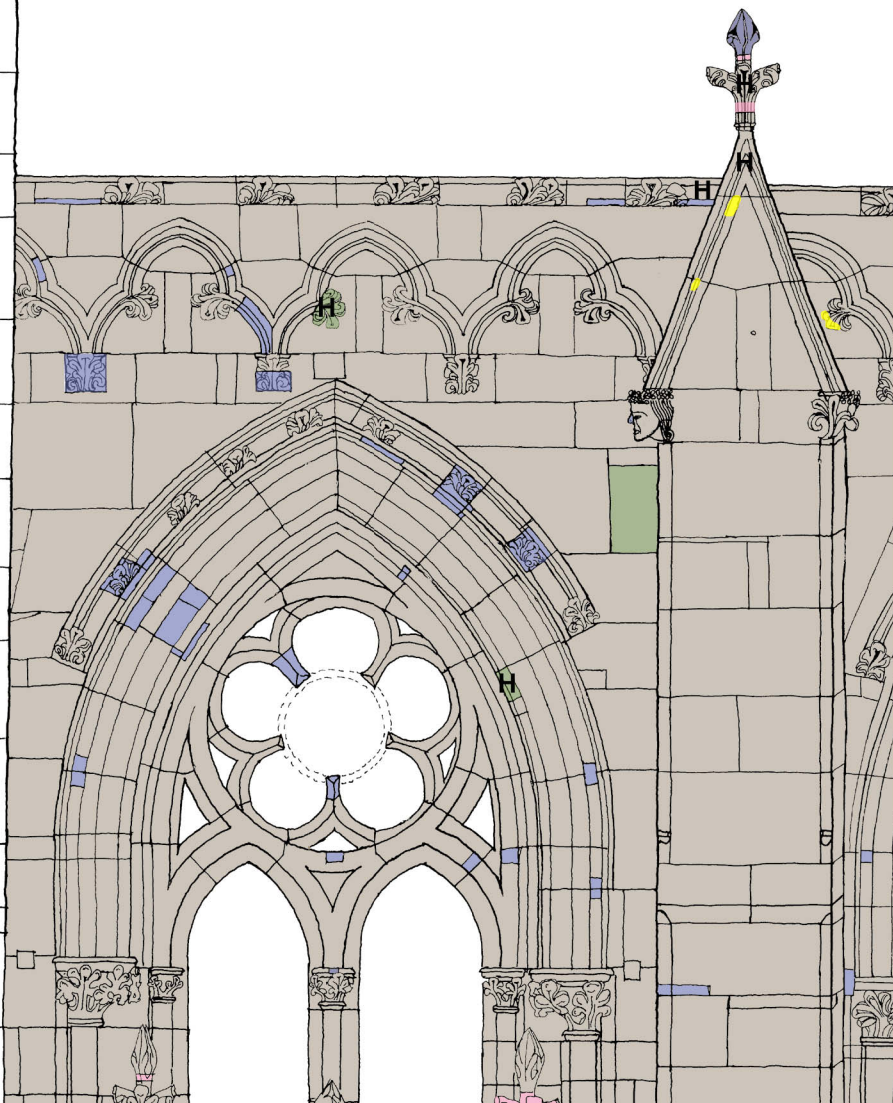


#### Skader

- Steinbortfall og steinsprekk
- Fugesprekk
- Steinforvitring - sterk
- Steinforvitring - svak
- Sorte skorper
- S Saltutbløstring
- Alger, lav og noe mose
- Jerndybler
- Kobberkramper

## Stavanger domkirke

### Sørveggen Vestre felt oppe



#### Steintyper

- Glimmerskifer
- Bjørnåkleber (1920)
- Mørtelreparasjoner
- Grønnskifer (Middelalder - MA)
- Stavangerkleber (MA)
- Diverse kleber (1870)
- Kviknekleber (1986)
- Bruddsteinsmurverk (MA)
- [H] Hard blålig/grålig kleber